

# INVERTER 2500va



## PRODUCT OVERVIEW

- Designed for continuous duty rail transportation service – 74 Vdc input
- Designed for high in rush loads, Air Conditioners, Microwaves etc..
- Designed for mobile and industrial applications, meets IEC60571 standard.
- Efficiency greater than 85%
- Self-protected for overloads, shorts, over temperature, input over and under voltage, reverse polarity, surge suppression.
- Incorporates output filtering for extremely low EMI emissions. Is completely isolated input to output.

**SYNCHRONISATION AVAILABLE FOR MORE POWER OUTPUT**

# INVERTER 2500va

PIN 1020070000

## Input

**Voltage** 74 Vdc nominal , 64 to 89 Vdc  
**Current** 40 Amperes @74 Vdc and 2500 VA load

## Output

**Voltage** 117 Vac  $\pm 5\%$  over full operating range  
**Power** 2500 Va nominal , 2550 Va (max)  
**Current Limit** 23 Amperes rms  
**Line Regulation** 5% from no load to max load (64 to 89vdc)  
**Waveform** Sinusoidal (THD  $< 5\%$ )  
**Frequency** 60 Hz  $\pm 1$  Hz  
**Load Power Factor** 0.7 lead to 0.7 lag  
**Efficiency**  $\geq 85\%$  at nominal load

## Indicators

**DC input** On when voltage present and within operating range  
Flashing when voltage present and over or under range.  
**AC output** ON when available  
Flashing when not available due to over temperature. OFF when overcurrent  
**Fault Indicator** ON when input fuse is open

## Protection

**Over-current** Cut-off after 2 seconds, automatic reset after 30 seconds  
**Input Overvoltage** Shutdown above 90 Vdc  
**Input Undervoltage** Shutdown at 64 Vdc. Restart at 69 Vdc  
**Overload** Output thermally protected  
**Over Temperature** Cutoff at  $+100^{\circ}\text{C}$ ( $212^{\circ}\text{F}$ ), restart at  $+90^{\circ}\text{C}$ ( $194^{\circ}\text{F}$ )  
**Input Reverse Polarity** Protected  
**Input Protection** Fuse, surge suppression and filter.  
**Isolation** Transformer, floating output

## Environment

**Operating Temp.**  $-40^{\circ}\text{F}$  to  $158^{\circ}\text{F}$  ( $-40^{\circ}\text{C}$  to  $70^{\circ}\text{C}$ )  
**Storage Temp.**  $-40^{\circ}\text{F}$  to  $185^{\circ}\text{F}$  ( $-40^{\circ}\text{C}$  to  $85^{\circ}\text{C}$ )  
**Dimension** 14.25" H 10" L 9.5" D  
**Weight** 48 Lbs (21.77 kg)

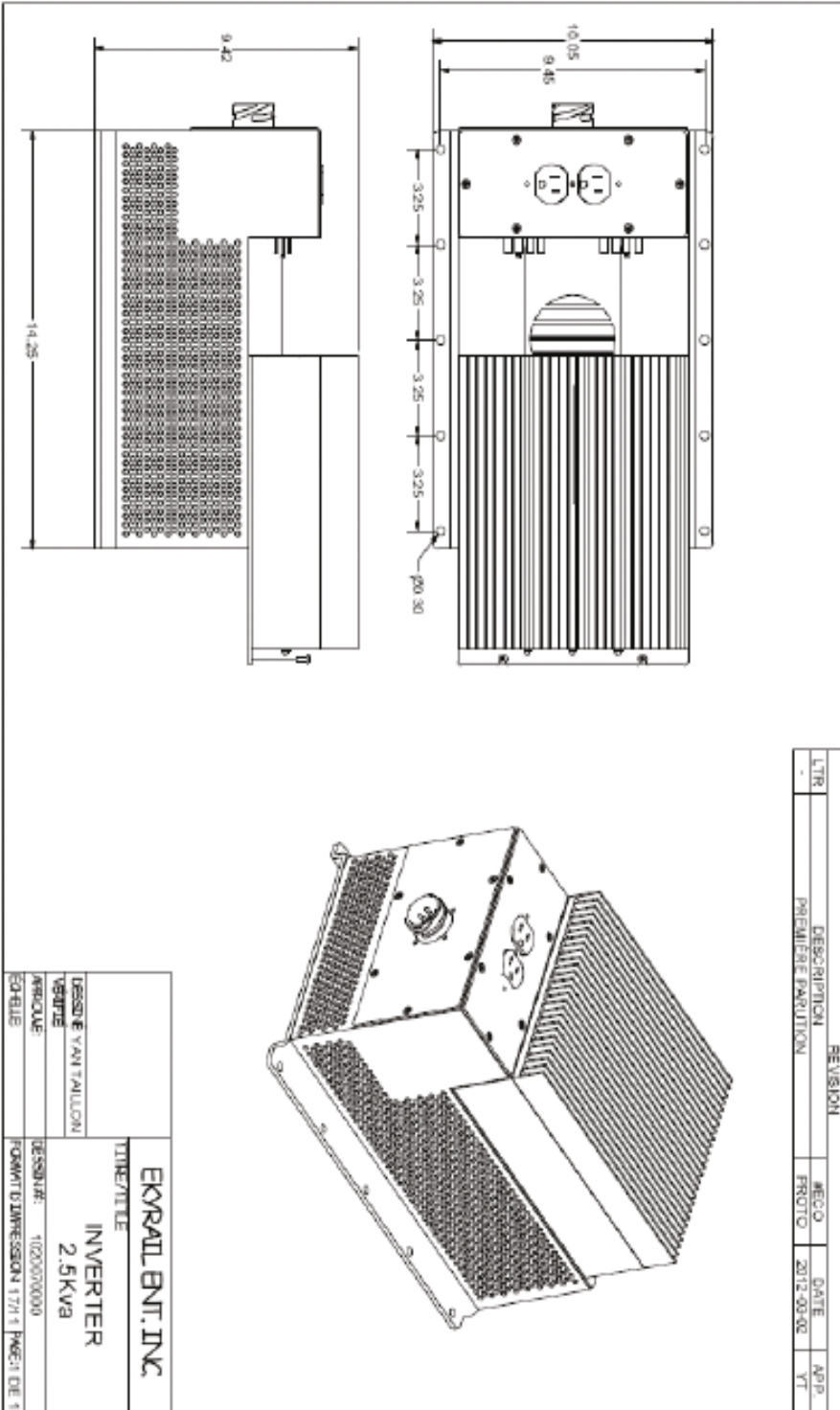
[www.ekyrail.com](http://www.ekyrail.com)

Les Entreprises Ekyrail Inc  
425 Boulevard Ford  
Châteauguay, QC, J6J 4Z2

Tel: (450) 692 1376  
Fax: (450) 692 6411

# INVERTER 2500va

PIN 1020070000



[www.ekyrail.com](http://www.ekyrail.com)

Les Entreprises Ekyrail Inc  
425 Boulevard Ford  
Châteauguay, QC, J6J 4Z2

Tel: (450) 692 1376  
Fax: (450) 692 6411